

A tradition of innovation.

**MEYER** Y A C H T S

1 7 9 5

CONTENTS

01	the shipyard
09	the philosophy
19	the ONE50
43	the TWO10
67	the THREE05
75	the FOUR20



the shipyard

the shipyard

the shipyard

*the shipyard*

the shipyard

the shipyard

the shipyard

the shipyard





## A STRONG HERITAGE

The company was founded in Papenburg, Germany and our shipyard facilities are still located there to this day. This is where the shipyard's founder, Willm Rolf Meyer, started building small wooden sailing boats in 1795. More than 700 ships of different types have been built at the yard to date.

The other shipyards in the 6,500 employee strong MEYER Group are NEPTUN WERFT in Rostock and MEYER TURKU in Finland. We design and build ships tailored to the needs of our clients and with a wealth of expertise and innovative solutions. Our new yachting division MEYER YACHTS follows exactly the same path.

*Bernard Meyer*







## BUILDING WITHOUT LIMITS

With two covered building halls and state-of-the-art manufacturing facilities in Papenburg, we are one of the largest and most modern shipyards in the world with halls of 370 and 504 metres in length. More than 50 luxury vessels have left our shipyard – and the next ones are already under construction.





## TECHNOLOGY

We are a compact shipyard and our production techniques are characterised by “short distances” which makes us one of the most efficient shipbuilders in the world. To further increase efficiency, our IT infrastructure and digital technologies, such as Virtual Reality applications, are fully utilised and are crucial to our success. From the very first design to the final production, the feasibility of every idea can be evaluated up-front, saving time and money and giving us the opportunity to deliver innovations again and again.





the philosophy

the philosophy

the philosophy

*the philosophy*

the philosophy

the philosophy

the philosophy

the philosophy



## FAMILY

For over 225 years and seven generations, the Meyer family kept the shipyard on course. In the decades and eventually centuries that followed, MEYER WERFT repeatedly demonstrated a pioneering spirit. We have steadily expanded our production and shipbuilding halls and we know that we owe our success first and foremost to our employees and the partner companies that work for us. We therefore ensure that we work together as partners - and convey one decisive value in every respect: reliability.







MEYER WERFT has always been testing the technology of the future. The shipyard currently employs more than 1,400 engineers who are primarily concerned with how to make ships and yachts even more efficient and therefore more sustainable. One focus is the fuel cell - hydrogen combining with oxygen generates electricity and heat.

The hydrogen is obtained from methanol, which can be produced from renewable energy sources in the long term. Thus, fuel cells work without harmful emissions, only water vapor is produced. In terms of equipment and entertainment features on board, we have never had to disappoint a customer. We make the impossible possible.





## FREEDOM MEANS RESPONSIBILITY

At MEYER we strongly believe that we have a duty to build our products as environmentally friendly as possible. That's why our specialist technicians and engineers are constantly working on the most advanced technologies that will make our yachts even more energy-efficient and sustainable. Our objective is to build climate neutral yachts with alternative and renewable fuels – we're putting all our passion and skill into the development of new ideas.

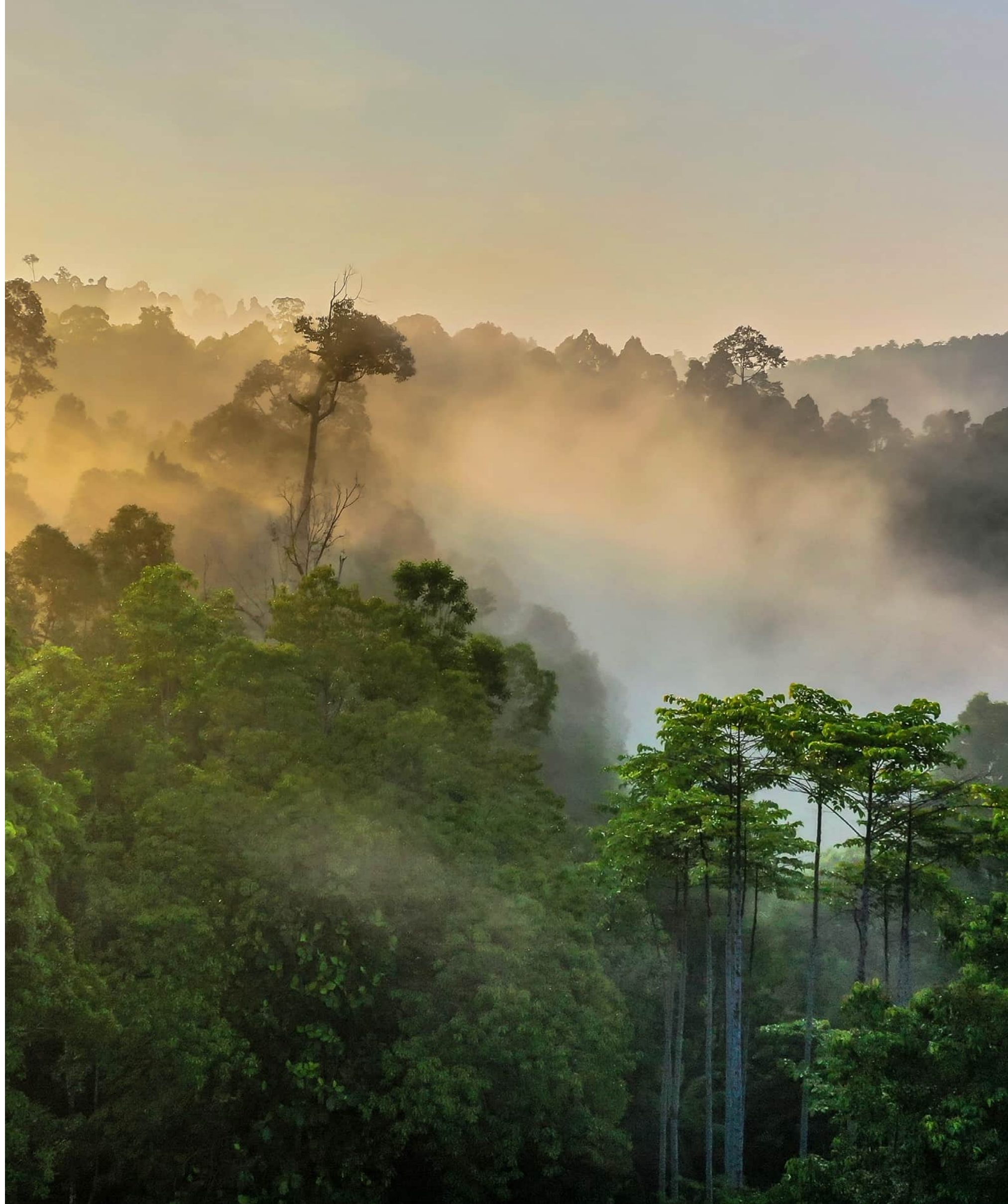
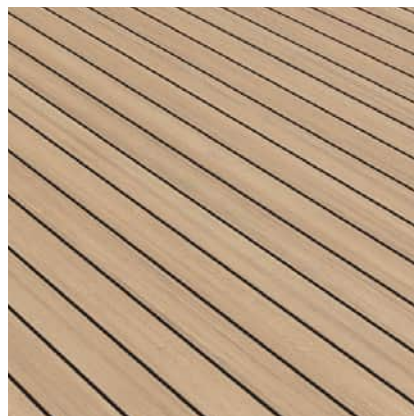




## SUSTAINABLE MATERIALS

In addition to sustainable propulsion, the choice of materials can also have a substantial impact on the yacht's environmental footprint. That is why our team is happy to discuss sustainable options with the customer. A material's environmental impact derives from its full lifecycle: from the extraction of raw materials to the eventual disposal or recycling. Many eco-friendly options are already available for decking, interior materials and furniture.

The largest share of shipbuilding emissions comes from the vessel's steel structure. As the demand for green shipping-grade steel increases and decarbonisation efforts develop, these emissions will gradually decrease.







the ONE50

the ONE50

the ONE50

*the ONE50*

the ONE50

the ONE50

the ONE50

the ONE50



## REDEFINING BOUNDARIES

As the first model from MEYER YACHTS, ONE50 immediately shows what the new brand stands for - pioneering spirit without limits. At 150 metres long and 20 metres wide, ONE50 has an impressive volume of 11,000 gross tons. Fuel cells and batteries are installed in the engine room to make ONE50 as sustainable as possible. Producing 11,000 kilowatts of power, ONE50 will reach a service speed of 16 knots.







## A HOME AT SEA

Over six decks the yacht can accommodate a maximum of 36 guests. It offers a spa on two levels, a cinema with an adjoining billiard saloon, an entertainment area including a stage, an art gallery and a huge infinity pool at the stern. The possibilities for customisation of the interior and features are countless.







## ONE OF MANY FIRSTS

Wellness is one of the core themes of the ONE50 because it fits perfectly with the yacht's sustainable aspirations and thus with its potential customers. At MEYER, however, a spa area must also be state-of-the-art. That's why, for example, the ONE50 will have a pool that slides out of the hull at the push of a button.

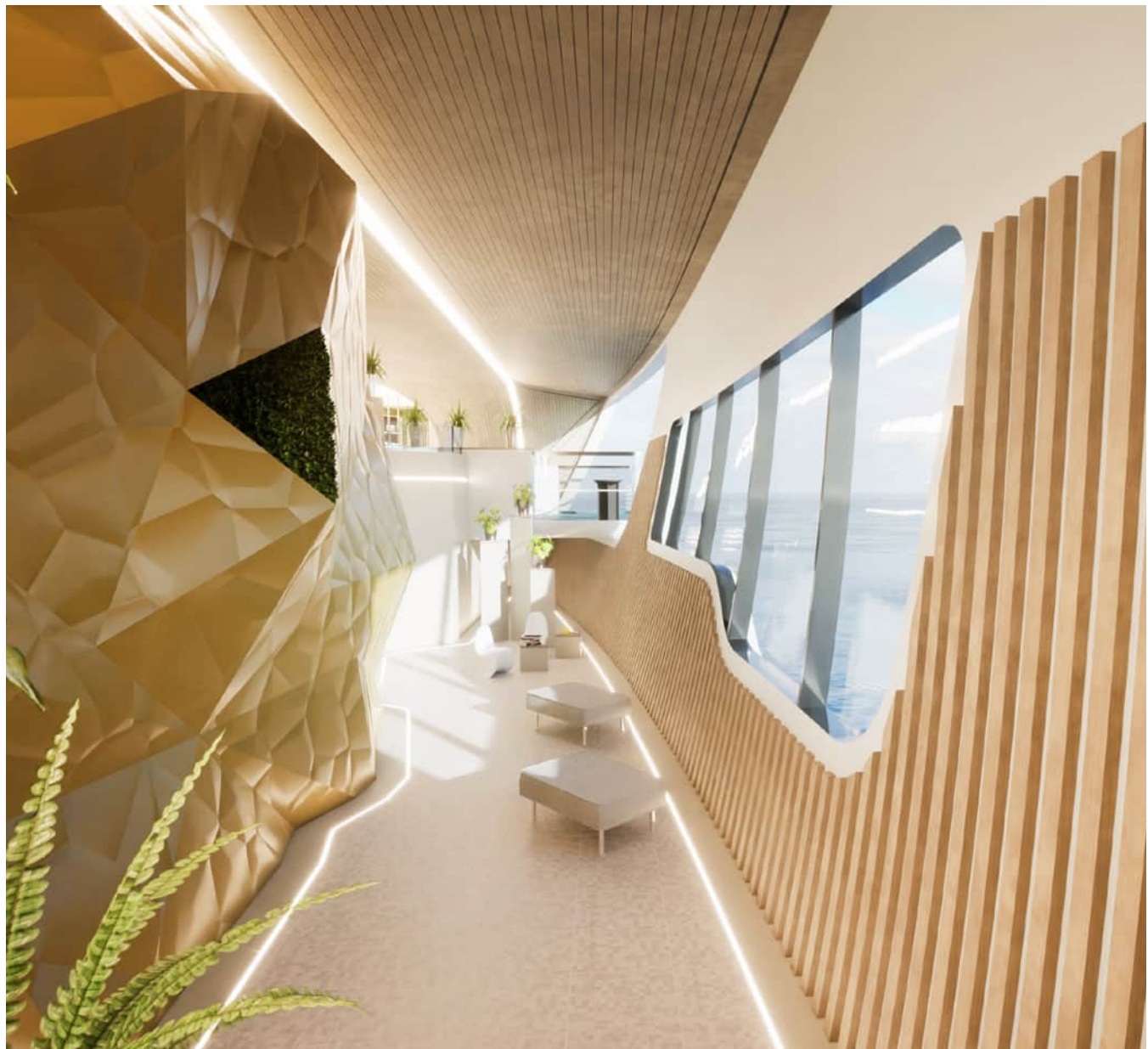
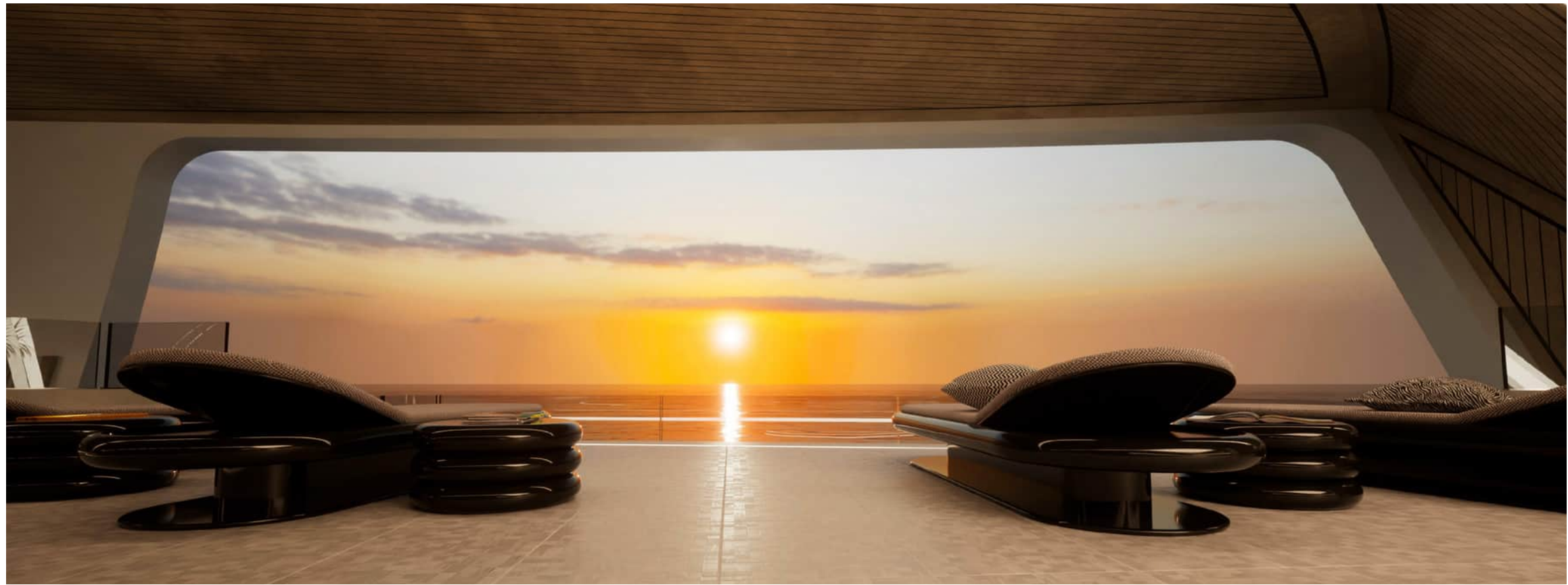


## RETREAT ON TWO DECKS

The ONE50's spa extends over two levels and is located in the bow area. It captivates with its natural design, its Zen atmosphere and is a great retreat in a world where we are exposed to constant hyperstimulation. The interior is what the designers of the ONE50 call soft minimalism.







# SUNSETS AND SUMMITS

In addition to lounge furniture, a fireplace, a wellness bar and two whirlpools, the spa of the ONE50 also has a feature for very active guests. Those who wish can ascend from one level to the next on a climbing wall.





## CAMPFIRE ROMANCE





## BREATHTAKING VIEWS

The top deck is reserved for the owner. Complete privacy and the best views are two essential features of this suite, which has 180 degree glazing in the forward area. Access to this deck is strictly controlled.





## INSIDE OUT

The first yacht ever to have this feature, the ONE50 has its own pool in the master suite. The owner can virtually swim out of bed to the outside. This world first is made possible by the shipyard's 1,200 engineers and their technological expertise.





## TOTALLY UNDISTURBED

Aft on the upper deck, lunches, dinners or business meetings can be held in a completely undisturbed atmosphere and if necessary the crew can shade the area with awning systems. The large-format windows allow views into the master lounge.





## RELAXING IN PRIVATE

The owner's salon, aft of the top deck, is a very intimate retreat with a relaxed atmosphere. In addition to TV and audio equipment, the facilities also include a bar and a small dining area. Also here, access is strictly regulated.





# BATHED WITH LIGHT

Large-format windows bathe the owner’s lounge with daylight. They reflect the heat however, to reduce the load on the air-conditioning system - another aspect of a sustainable mega yacht. Wood and cream tones dominate the décor.







the TWO10

the TWO10

the TWO10

*the TWO10*

the TWO10

the TWO10

the TWO10

the TWO10



## SLEEK GIANT



MEYER YACHTS has capacities like no other shipyard. After the ONE50, the brand launched the TWO10 - a sleek, novel design with a length of 210 metres. This yacht, which would currently be the world's largest, has an estimated volume of 31,000 gross tons and is powered by fuel cells.

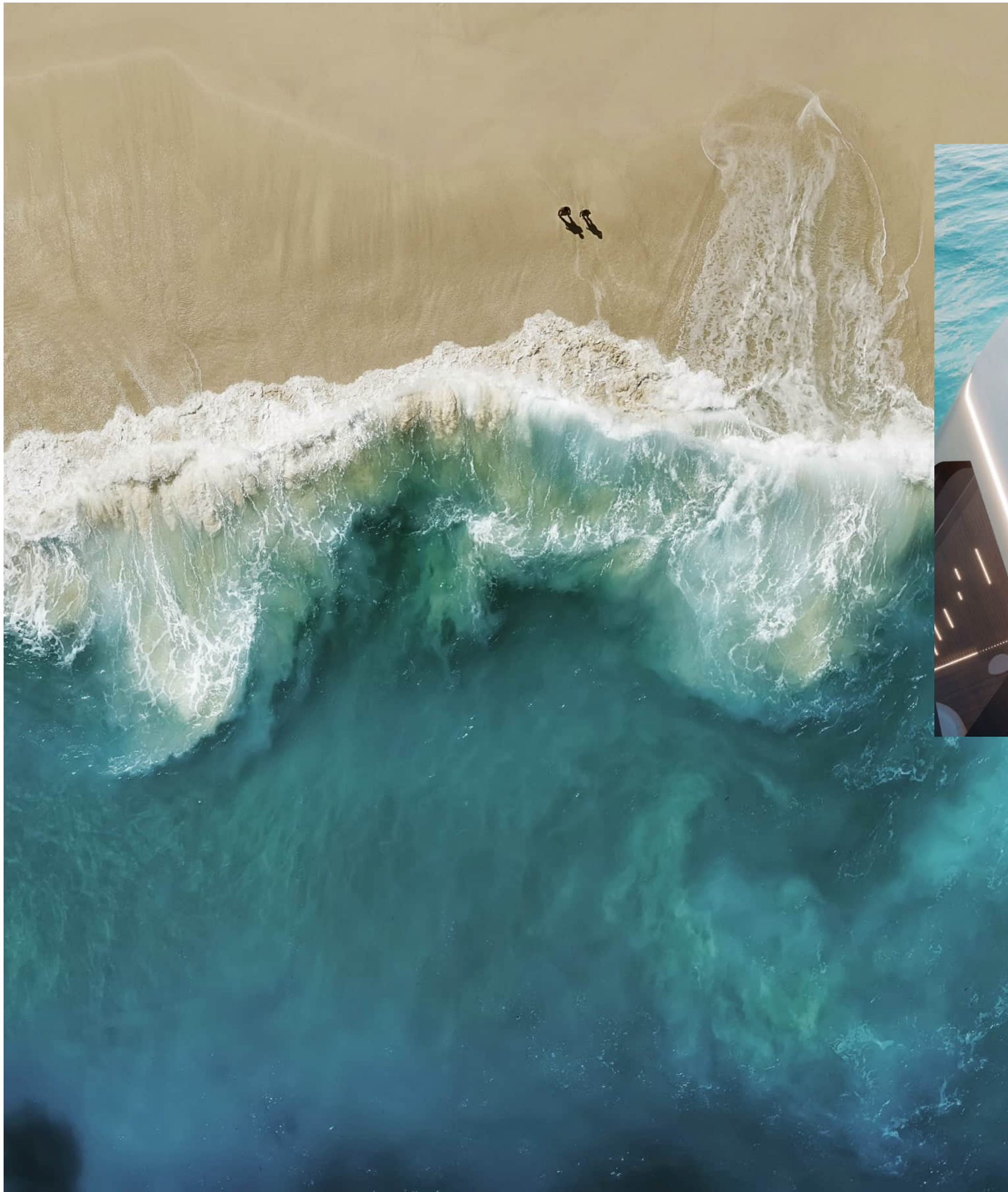


## ACCESS ALL AREAS

The TWO10 is a design with a range that can easily navigate all oceans. The yacht's construction also allows her to cruise polar waters. Producing over 14,000 kilowatts of power, the maximum cruising speed is 17 knots. With her sustainable propulsion and on-board systems, she leaves a clean\* ecological footprint. The superstructure of the TWO10 is kept rather flat to give the silhouette an elegant and almost sporty character.

\*zero CO<sub>2</sub>, NO<sub>x</sub>, PM and SO<sub>x</sub> fuel emissions

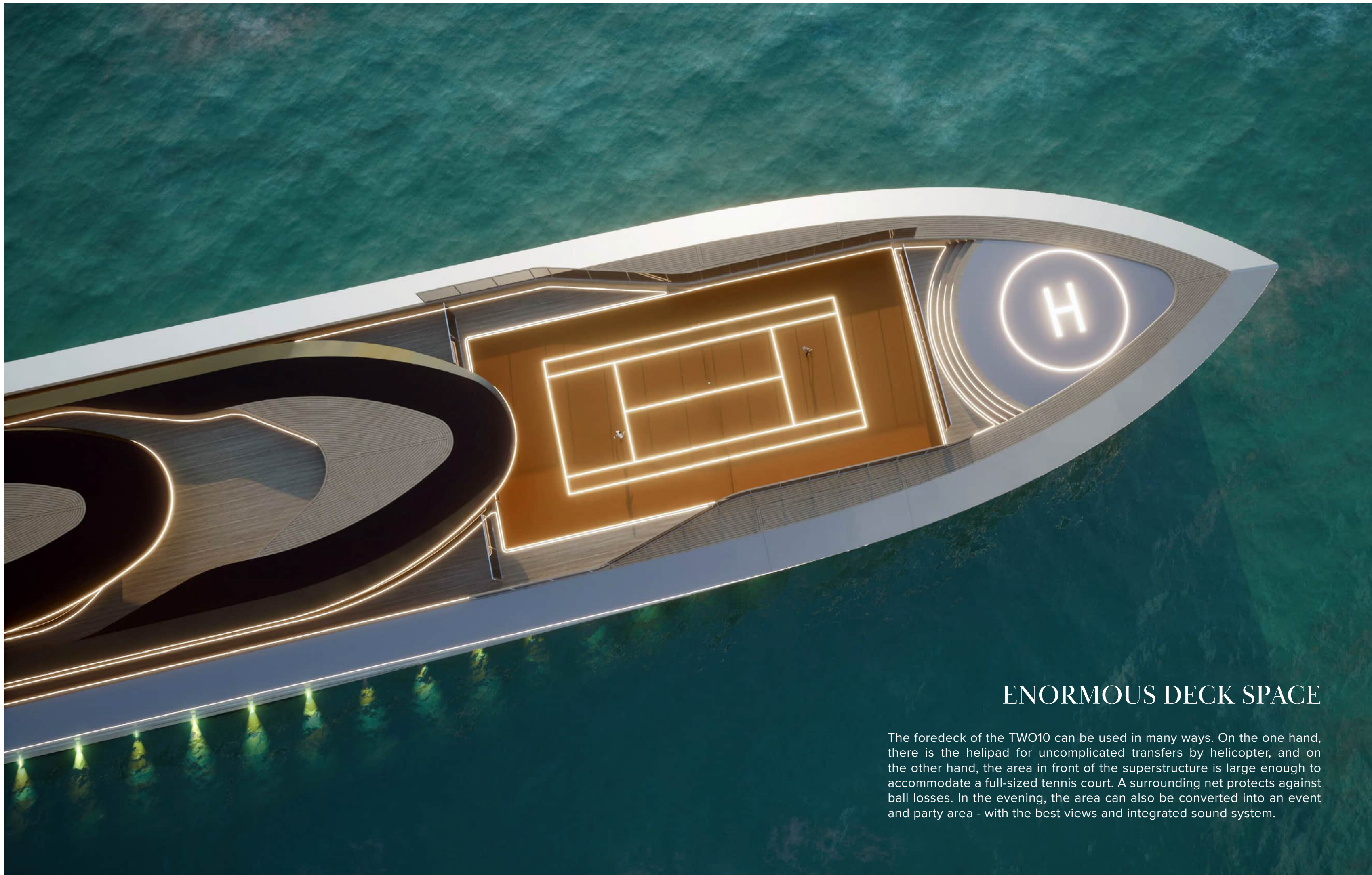




## SUCH A COOL POOL

The aft decks are where much of the yacht's daily life takes place. Here, extended lunches are enjoyed and al-fresco dinners are served in the evening. Numerous seating options provide space for smaller groups. In the center of the main deck, the TWO10 has a cutout with a surrounding bar that allows views of the beach club. The coolest feature, however, is the whirlpool on the starboard side with a glass cutout in the bulwark.





## ENORMOUS DECK SPACE

The foredeck of the TWO10 can be used in many ways. On the one hand, there is the helipad for uncomplicated transfers by helicopter, and on the other hand, the area in front of the superstructure is large enough to accommodate a full-sized tennis court. A surrounding net protects against ball losses. In the evening, the area can also be converted into an event and party area - with the best views and integrated sound system.

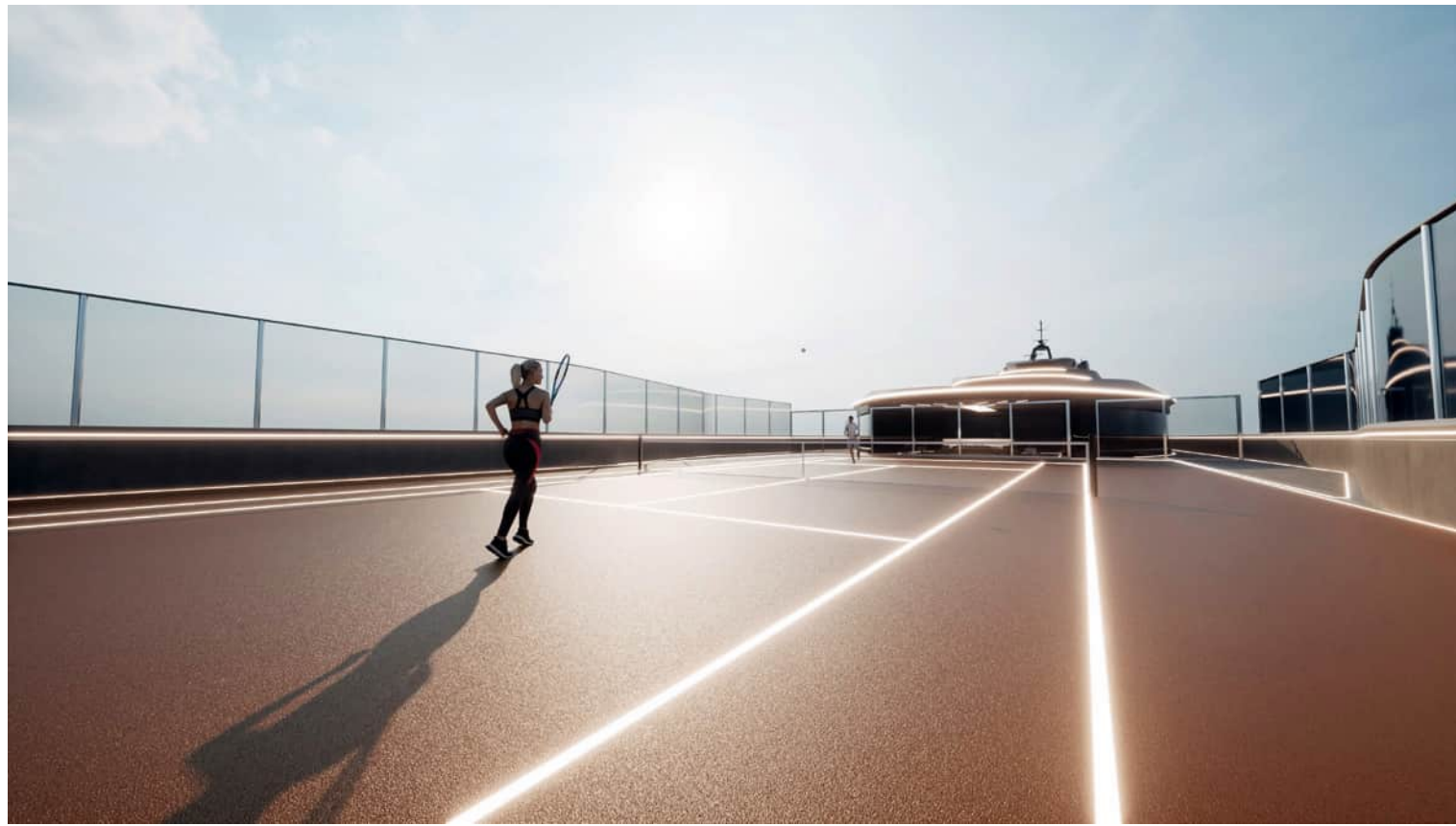




## SERVE AND VOLLEY

The luxury of having your own sports court in front of your suite is priceless, but the foredeck of the TWO10 is not just for tennis matches. Imagine yoga sessions with a view of the horizon, a workout session with a personal trainer or playing a game of basketball with your friends. Just like in the old days. Only in a different setting.







## UNDER THE STARRY SKY

The top deck of the 210-metre yacht is reserved exclusively for the owner. Large-format windows guarantee spectacular views - not only of the sea, but also of the starry sky at night thanks to a skylight. Further aft are additional private areas on an unprecedented scale.



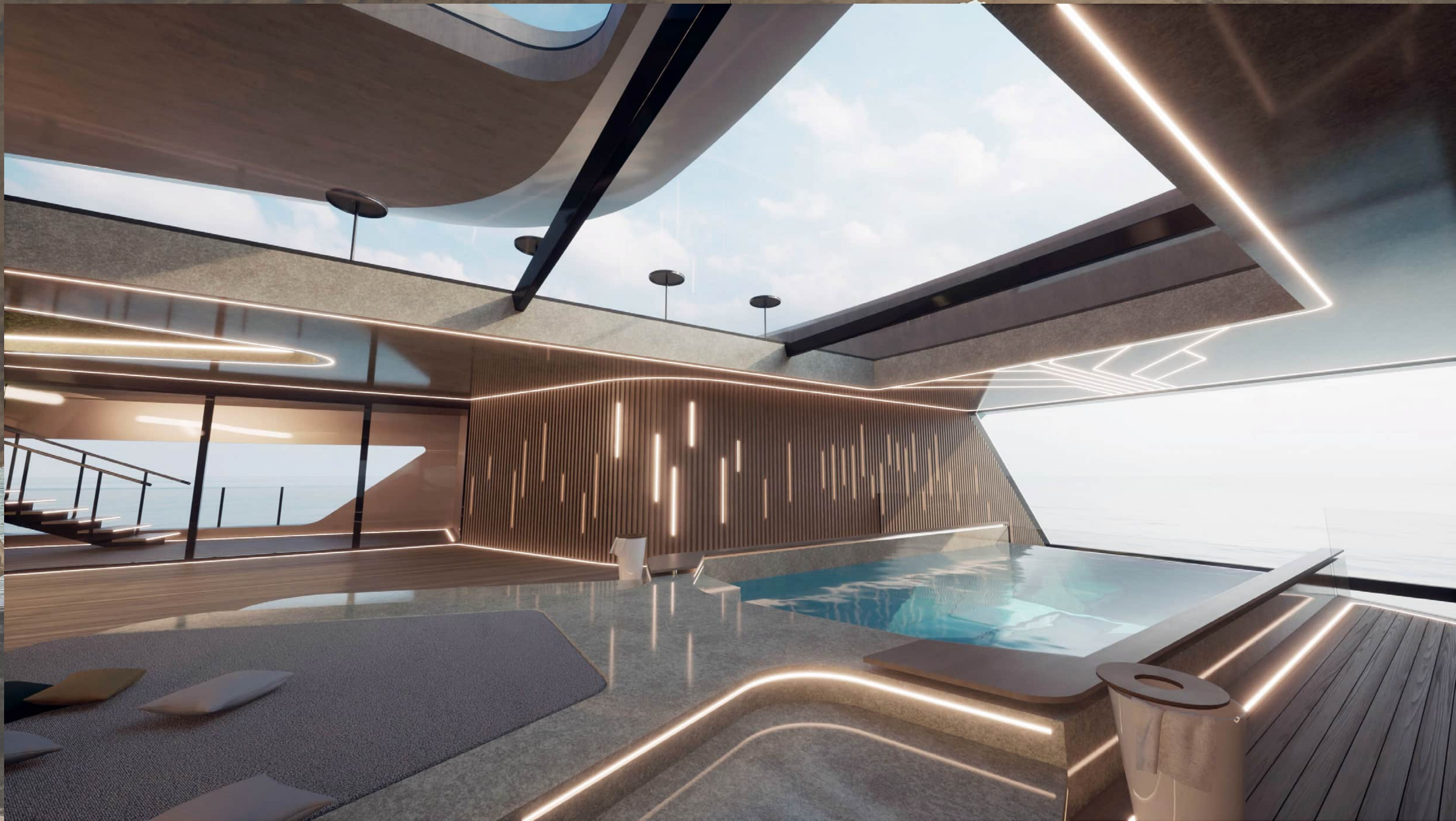




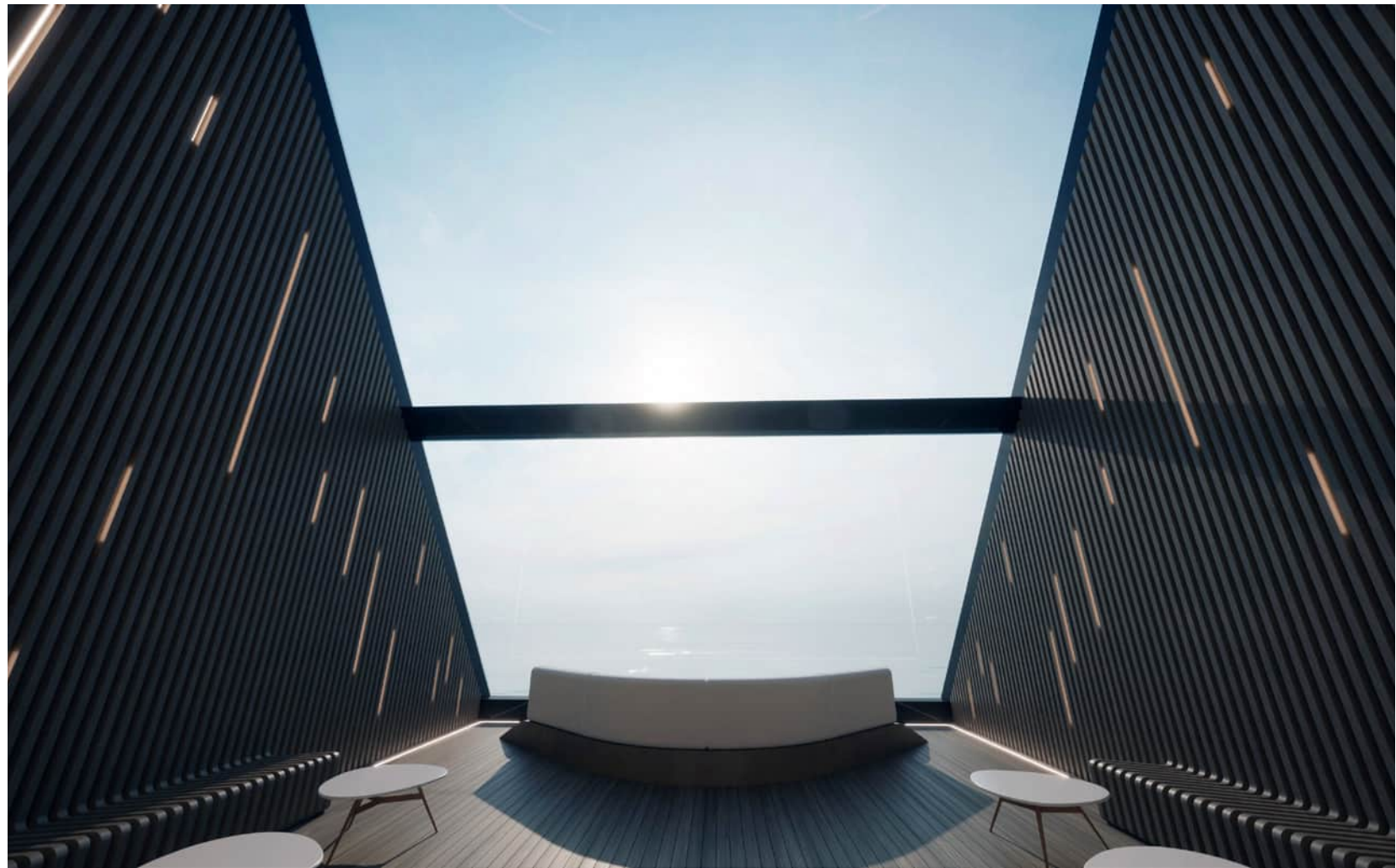
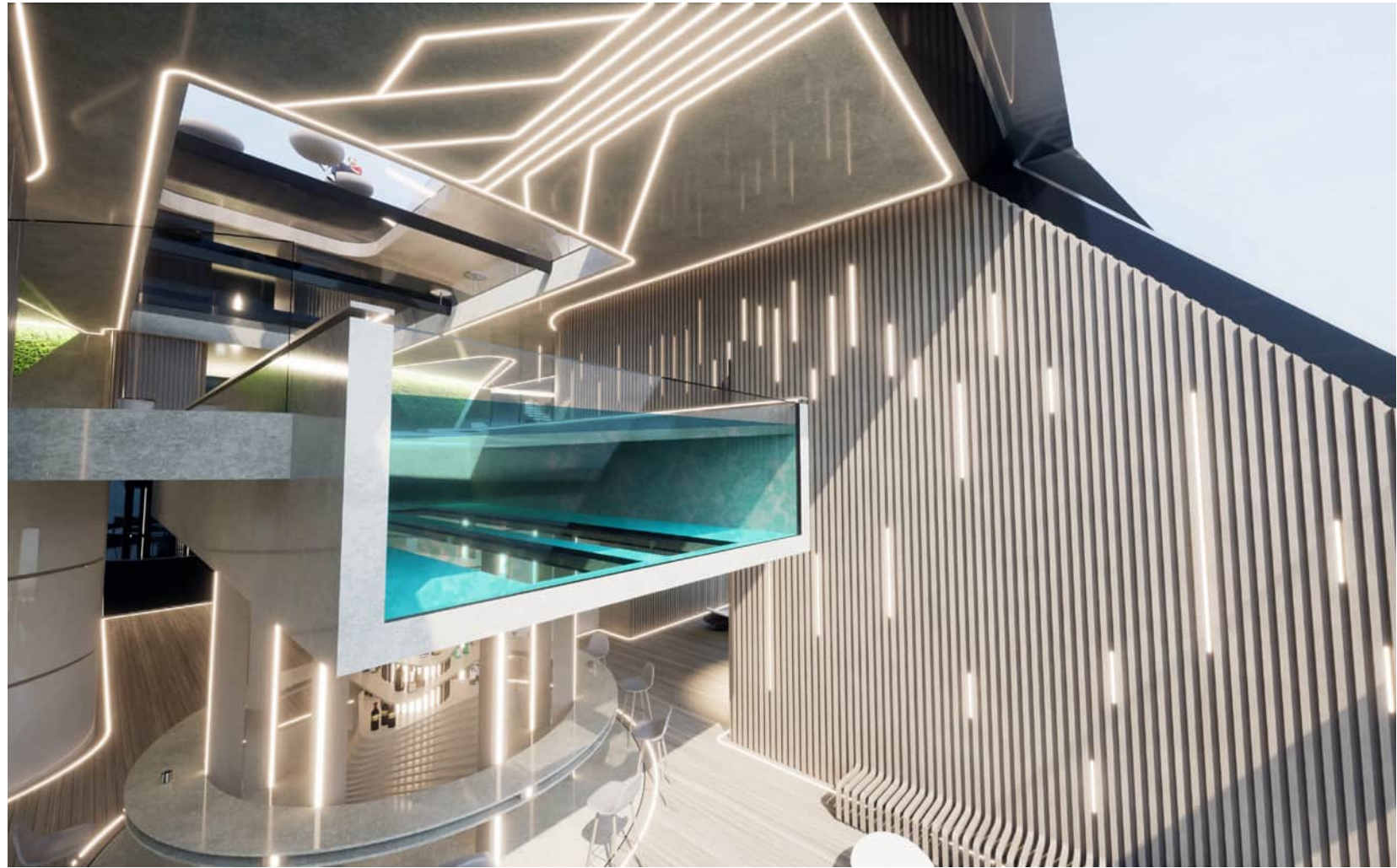
## SCULPTURE BY NIGHT

As soon as the sun sets, a unique lighting concept illuminates the yacht, giving it an almost futuristic look. The design is particularly exciting at the stern, where one of the world's largest yacht beach clubs is located. Even a retractable diving board is part of the equipment. The tenders and chaseboats of the TWO10 also dock here at the side.









# AT THE WATER'S EDGE

The beach club extends over two levels and offers enough space for dozens of guests if needed. On the upper level, an infinity pool can be used, its glass cutouts illuminating the bar below. In the stern, the TWO10 has the largest glass panel ever installed on a yacht. Spacious openings offer access to the sea from the side.





## A FANTASTIC PERSPECTIVE

The bar of the beach club will become one of the hotspots of the yacht at anchor. With a light breeze, an undisturbed view and chilled drinks, the days will end quietly. Alternatively, the area serves as a location for glamorous parties.







the THREE05

the THREE05

the THREE05

*the THREE05*

the THREE05

the THREE05

the THREE05

the THREE05





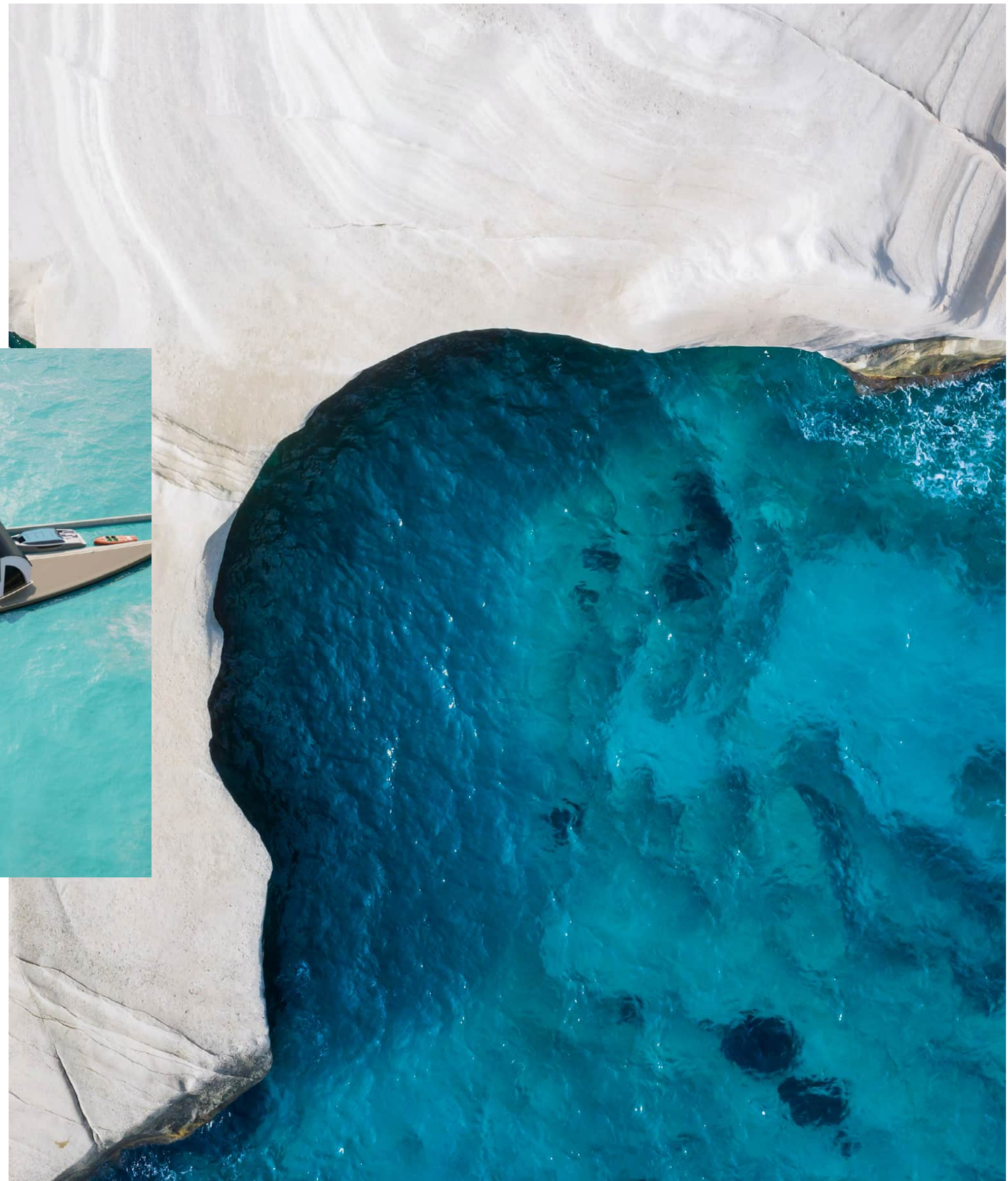
## A SAFE HAVEN

The exciting THREE05 concept by MEYER YACHTS is brought to life in cooperation with MEYER Floating Solutions. This visionary fusion combines our 125-metre yacht with a 180-metre floating villa. A new standard for yachting has been set, offering unparalleled benefits of freedom and security.



## INDULGENCE MEETS ADVENTURE

Imagine waking up with 360° sea views in a floating villa, offering all the amenities and comforts of home. Enjoy a morning swim in the pool at sunrise, followed by a lavish breakfast on the terrace. Seamlessly step onto the yacht to spend the day exploring hidden coves and secret islands. The sea breeze offers relief from the heat as lunch is enjoyed in the middle of nowhere at sea. While the sun begins to set, the silent oasis welcomes you back as the yacht docks perfectly at the side.







# IRRESISTIBLE INVITATION

One of numerous perks of the collective design process is the yacht’s seamless attachment to the floating villa’s curved docking site. The villa provides 2,100 m<sup>2</sup> of luxurious interior areas, while a small marina accommodates several tenders, allowing guests to land comfortably. The yacht has an estimated gross tonnage of 7,500 GT and she provides comfortable lodging for up to 30 guests. She is powered by environmentally conscious hybrid technology consisting of fuel cells and batteries.

Together the yacht and villa comprise the ultimate experience of on-water luxury living: the THREE05.







the FOUR20

the FOUR20

the FOUR20

*the FOUR20*

the FOUR20

the FOUR20

the FOUR20

the FOUR20





## AN ODE TO PERSONALISATION

FOUR20 is the name we chose for our newest innovative concept. Let us present our first explorer-type yacht of 140 meters together with a 160-metre floating module hub by MEYER Floating Solutions. The idea lies in the interchangeable 20-metre modules and easy sliding mechanism for undocking and docking.



# A MODULE FOR EVERY NEED

The modular approach enables the owner to reconfigure their yacht to suit different purposes and needs. Whether planning to embark on an expedition, host a lavish party or go fishing - the modules offer a unique setting optimised for every desire. Which module will you choose today?



Hospital/humanitarian aid



Sport fishing



Extra battery



Event venue



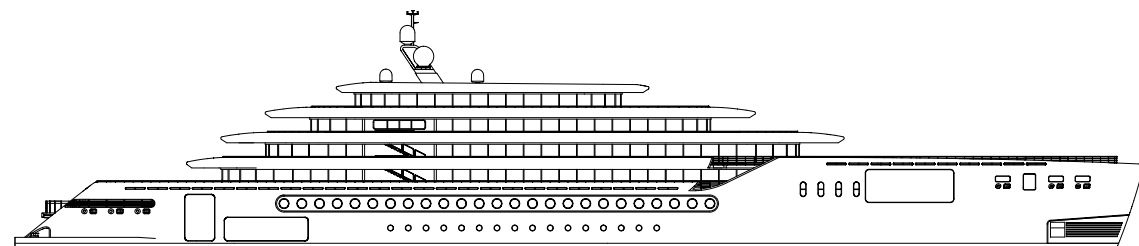


MEYER has mastered modularisation of seagoing vessels for generations. FOUR20 shows how MEYER YACHTS has no limits when it comes to innovation and outside-the-box thinking.

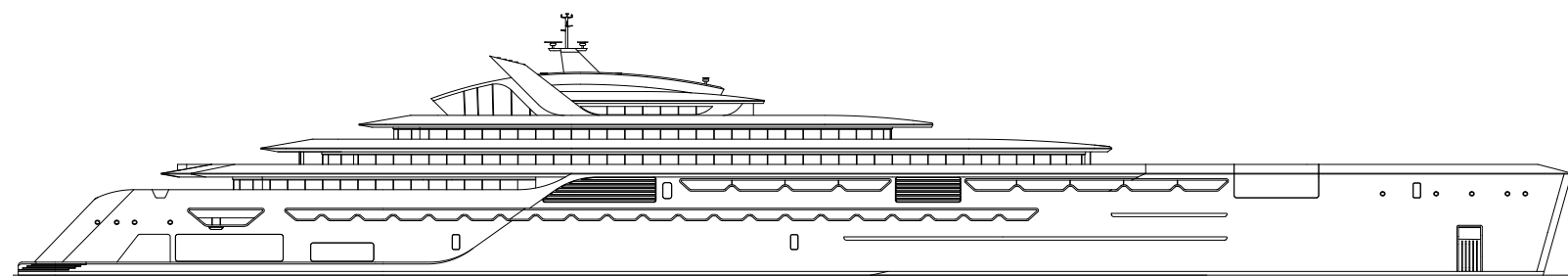
**Lars Kruse**  
Head of Sales and Design



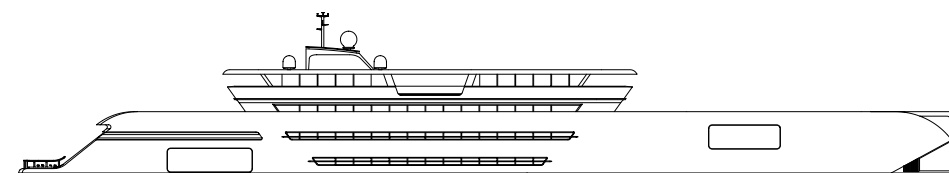
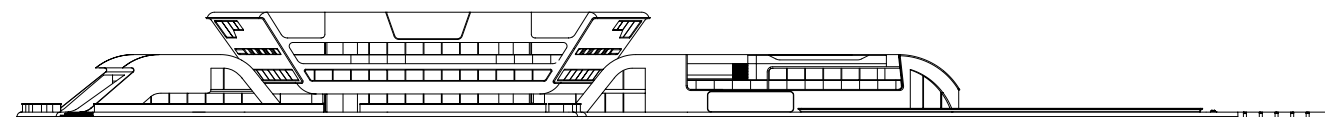




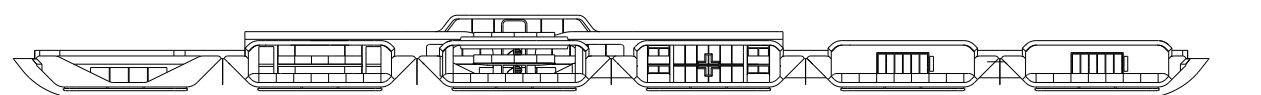
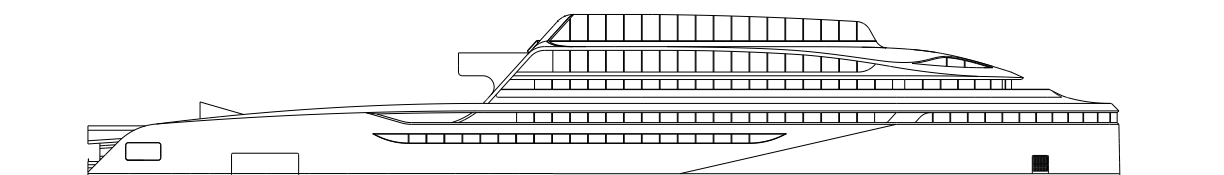
ONE50



TWO10



THREE05



FOUR20

**MEYER** YACHTS

1795

[sales@meyeryachts.com](mailto:sales@meyeryachts.com)  
[www.meyeryachts.com](http://www.meyeryachts.com)



[inquiries@meyerfloatingsolutions.com](mailto:inquiries@meyerfloatingsolutions.com)  
[www.meyerfloatingsolutions.com](http://www.meyerfloatingsolutions.com)



**MEYER** Y A C H T S

1 7 9 5